

TEXTON

OPTEX SCREENS

SUGGESTED RETAIL PRICING AUGUST, 2018



Today's Standard Fixed Solar Screens



OPTEX Fixed Solar Screens

The look of Plantation Shutters on your windows! **OPTEX** is a Fixed Solar Screen for use on the outside of windows. Outdoor Solar Screens are the most energy efficient window coverings, by stopping heat and glare before the sun's rays reach the window. When combined with **Texton's** Latex printing technology, the screen is no longer noticeable, and instead, gives the outward appearance of plantation shutters; all while allowing a clear view to the outside.

Preserve the view, both inside and out, with **OPTEX**.

MULTIPLE PATENT(S) PENDING

TEXTON.COM

800-442-1540

SUGGESTED RETAIL PRICING

48" wide X 96" high is the widest size allowed for OPTEX utilizing Plantation Shutter renderings. However, OPTEX can be created utilizing custom graphics and images up to 72" wide X 96" high.

| HEIGHT | WIDTH | | | | | | |
|--------|-------|-----|-----|-----|-----|-----|-----|
| | 24" | 30" | 36" | 42" | 48" | 60" | 72" |
| 24" | 110 | 116 | 124 | 134 | 138 | 144 | 172 |
| 30" | 116 | 122 | 130 | 144 | 146 | 154 | 188 |
| 36" | 122 | 128 | 138 | 152 | 156 | 164 | 204 |
| 42" | 126 | 134 | 144 | 162 | 166 | 174 | 220 |
| 48" | 132 | 140 | 152 | 170 | 174 | 184 | 236 |
| 54" | 136 | 146 | 158 | 180 | 184 | 194 | 250 |
| 60" | 142 | 152 | 166 | 188 | 194 | 204 | 266 |
| 66" | 146 | 158 | 172 | 198 | 202 | 214 | 282 |
| 72" | 152 | 164 | 180 | 206 | 212 | 224 | 298 |
| 78" | 158 | 170 | 188 | 216 | 222 | 234 | 314 |
| 84" | 162 | 176 | 194 | 224 | 230 | 244 | 328 |
| 90" | 168 | 182 | 202 | 234 | 240 | 252 | 344 |
| 96" | 172 | 188 | 208 | 242 | 250 | 262 | 360 |

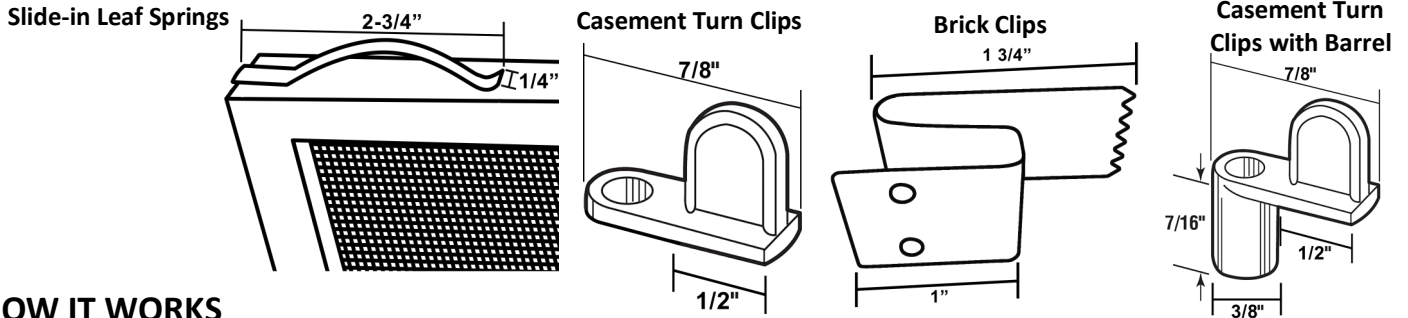
10% Openness- Textilene 90 by Twitchell. All frames are 5/16" thick X 1" wide. Frame Colors: Bronze, White, Tan, Champagne, and Mill (Clear Anodized). OPTEX uses Internal Corner Brackets.

No OPTEX Shutters wider than 48". For use with custom graphics and logos only. \$50 (NET) surcharge for custom graphics & logos per each project.

Texton will not take any deductions on OPTEX. All sizes ordered are considered exact. Customers should take any deductions needed, prior to placing order.

| | Suggested Deductions | Suggested Hardware |
|--|--|---|
| Windows with Existing Track | Deduct 1/8" from Width. Add 1/16" to Height to fit up in channel pocket. | Slide-in Leaf Springs on top, & Casement Turn Clips for side. |
| Windows Installed Inside Brick Surface Mount | Deduct 1" off window opening width. Deduct 1/4" off height. | Brick Clips |
| Surface Mount | Order Exact* | Turn Clips with Barrel |

*When mounting OPTEX Outside Mount and using Turn Clips, you must consider the space needed for Turn Clips. Dual Lock Velcro by 3M is also available.



HOW IT WORKS

It is highly recommended that you use the OPTEX Measure form located on page 5. Price using the Suggested Retail Pricing located at the top of this page and any Surcharge Prices located on page 4. Once ordered, Texton will send you renderings of your OPTEX Screens, based on your specifications. Once you approve the renderings, OPTEX will go into production.



MULTIPLE PATENT(S) PENDING

MEASURING & INSTALLATION

4 Common Types of Installing Fixed Solar Screens

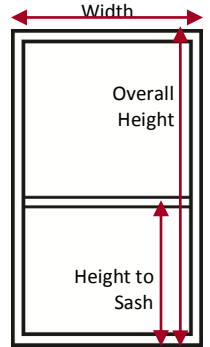
Windows with Existing Track- Screen is held in place with Leaf Springs & Casement Turn Clips.

Brick Clips- Pressure fit type clip for easy installation and removal. No screws required.

Surface Mount- Used when window is flush with siding and screws into the window frame are not desired. Casement clips with Barrel are used.

Direct Attachment with Screws- Screen is screwed onto the window frame with self-taping screws.

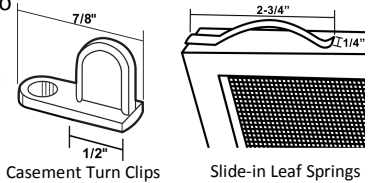
IMPORTANT- All window sizes require proper measurements consisting of width and height. Considerations must be taken relative any obstruction that may impact finished sizes needed, such as protruding brick. This Measuring & Installation information is merely suggested guidelines. **Texton will not take any deductions from your sizes. All ordered sizes must be exact.**



Windows with Existing Track

Many residential windows are aluminum, and have tracks that allow for Fixed Solar Screens to easily attach.

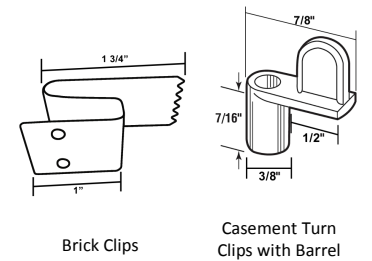
For the width, measure the screen channel on the window left to right and subtract 1/8 of an inch. For the height, measure from the bottom, into the bottom lip, and up to the screen channel at the top of the window. Add 1/8 inch so the screen will be able to fit up into the screen channel. Measuring the center brace from the bottom to the center of the sash or from the left to center depending on the window sash orientation.



To install, lift screen with leaf springs on top, into the screen channel so it will lift up over the bottom lip and then spring down into place. Be sure to measure for the center brace which needs to line up with the window sash. This method will usually only apply to Aluminum or Casement windows.

Solar Screens with Brick Clip Mount

If you are installing screens with brick clips, simply measure the brick or wood opening the window is set into and subtract 1" from the width and 3/8" height. Measure for the center brace, depending on sash orientation. Measuring the center brace from the bottom to the center of the sash or from the left to center depending on the window sash orientation.



To install, simply slip the clips over the frame and push screen into the opening.

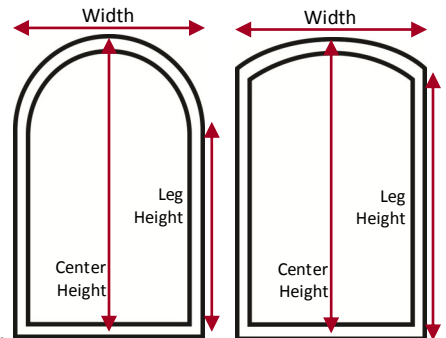
Surface Mount

For windows that are not inset and are flush with the building surface, measure width and merely take a 1" allowance for Casement Turn Clips with Barrel. Height deduction is discretionary based on window conditions.

Screw-on Method

If you are going to screw the screens directly to the window, measure the overall window and subtract 1/8 inch from width and height. Measuring the center brace from the bottom to the center of the sash or from the left to center depending on the window sash orientation. Measuring the center brace from the bottom to the center of the sash or from the left to center depending on the window sash orientation.

To install, place screen over the window, and use self-taping screws. Be careful not to run screws into the glass.



Solar Screens with Colonial Grids

Measure the overall screen the same as you would for screens without the grids. Count the quantity of vertical and horizontal grids desired. Texton will render the grids for your approval.

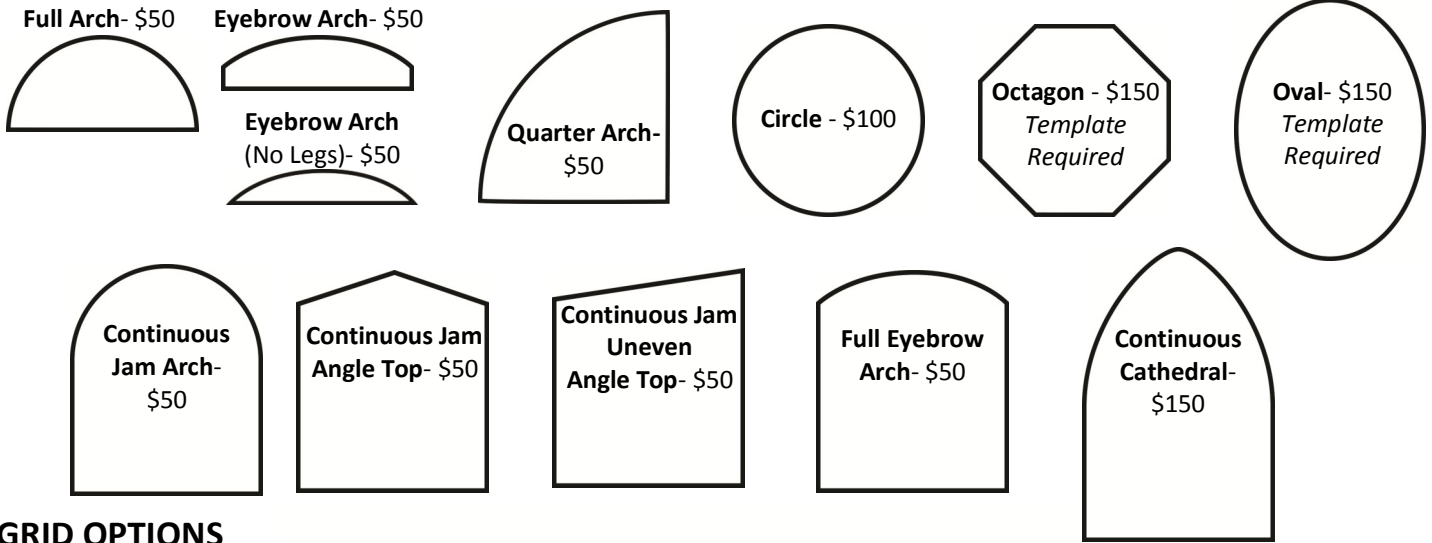
Measuring for Arches

Arches and odd shapes will typically be screwed on or applied with brick clips or casement clips. Measure the screen the same as you would a square one but be sure to note the center height of the arch, and side leg measurements. Refer to the arch drawings for specifics on measurements needed for these specials. For Octagons and odd shapes without curves, be sure to measure all outside dimensions plus overall width and height. For Ovals and odd shapes with curves please provide a template.

SPECIALTY SHAPE SURCHARGES

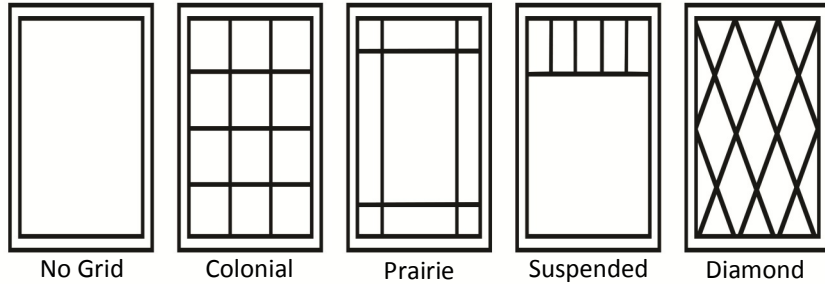
Price Specialty Shapes using the base size chart on page 2, and then add the surcharge price.

Please Note– If shipping, Specialty Shapes may need to ship assembled. **Additional freight charge may apply.**



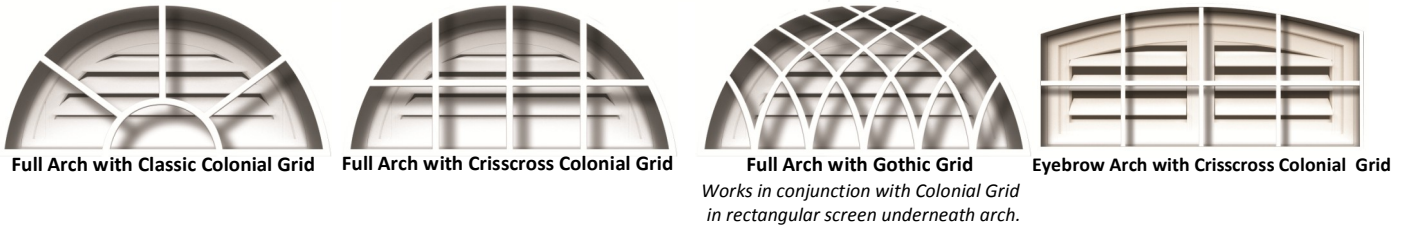
GRID OPTIONS

When ordering Colonial Grid Work, please specify the quantity of vertical and horizontal bars.



SPECIALTY ARCHES WITH GRID WORK

When ordering Colonial Grid Work, please specify the quantity of vertical and horizontal bars.



TYPES OF OPTIONS FOR OPTEX



Account Name: _____
 Account #: _____
 Phone #: _____
 Fax #: _____
 Email: _____

Frame/Grid Colors:

| | |
|-----------|--------------------|
| 1. White | 4. Champagne |
| 2. Bronze | 5. Mill (Anodized) |
| 3. Tan | 6. Black |

Sidemark _____ **Work Order #** _____

Shutter Colors:

| |
|--------------|
| 1. White |
| 2. Off-White |

| Qty | Mounting Type | Location | Specialty Options | Width | Height | Leg Height (If Applicable) | Frame Color | Shutter Color | Qty of Panels | Sash | | | Insect Screen Below Sash | Type of Grid | Color of Grid | Qty Vertical Grid | Qty Horizontal Grid |
|-----|---------------|----------|-------------------|-------|--------|----------------------------|-------------|---------------|---------------|----------|-----------|--------|--------------------------|--------------|---------------|-------------------|---------------------|
| | | | | | | | | | | Include? | Thickness | Height | | | | | |
| 1 | | | | | | | | | | | | | | | | | |
| 2 | | | | | | | | | | | | | | | | | |
| 3 | | | | | | | | | | | | | | | | | |
| 4 | | | | | | | | | | | | | | | | | |
| 5 | | | | | | | | | | | | | | | | | |
| 6 | | | | | | | | | | | | | | | | | |
| 7 | | | | | | | | | | | | | | | | | |
| 8 | | | | | | | | | | | | | | | | | |
| 9 | | | | | | | | | | | | | | | | | |
| 10 | | | | | | | | | | | | | | | | | |

Grid Options

| | | | | | |
|--|--|--|--|--|--|
| | | | | | |
|--|--|--|--|--|--|

Specialty Options

| | | | | | | | |
|---|---|---|---|---|---|---|---|
| 1 | 2 | 3 | 4 | 5 | 6 | 7 | 8 |
|---|---|---|---|---|---|---|---|

Comments:

Mounting Options

- Window with existing track - (Slide-in leaf springs & casement turn clips)
- Inside brick - (Brick Clips)
- Surface Mount - (Turn Clips with Barrel)
- Screw
- 3M Dual-Lock
- Other

IMPORTANT - TEXTON WILL NOT TAKE DEDUCTIONS. ORDERS MUST BE PLACED WITH EXACT SIZES

MEASURING FORM GUIDE



Phone: 972-494-5941 Fax: 972-276-5104

Page of

| | | | | | | | |
|---------------|--|------------------------------|--|-----------------|--|--------------|--|
| Account Name: | | Frame/Grid Colors: | | Sidemark | | Work Order # | |
| Account #: | | 1. White 4. Champagne | | Shutter Colors: | | 1. White | |
| Phone #: | | 2. Bronze 5. Mill (Anodized) | | | | | |
| Fax #: | | 3. Tan 6. Black | | 2. Off-White | | | |
| Email: | | | | | | | |

| Qty | Mounting Type | Location | Specialty Options | Width | Height | Leg Height (If Applicable) | Frame Color | Shutter Color | Qty of Panels | Sash | | | Insect Screen Below Sash | Type of Grid | Color of Grid | Qty Vertical Grid | Qty Horizontal Grid |
|-----------|---------------|-------------|-------------------|---------|---------|----------------------------|-------------|---------------|---------------|----------|-----------|--------|--------------------------|--------------|---------------|-------------------|---------------------|
| | | | | | | | | | | Include? | Thickness | Height | | | | | |
| 1 | 1 | | 2 | 3 | 3 | 4 | 5 | 6 | 7 | 8 | 8 | 8 | 9 | 10 | 11 | 12 | 12 |
| Example 1 | 1 | Dining Room | - | 35 3/4" | 70 3/8" | - | 1 | 1 | 1 | Yes | 2" | 31" | Yes | A | 1 | 2 | 5 |
| Example 2 | 1 | Living Room | - | 36" | 60" | - | 4 | 2 | 2 | Yes | 2" | 31" | No | - | - | - | - |
| Example 3 | 1 | Living Room | 1 | 36" | 18" | - | 4 | 2 | 2 | No | - | - | - | - | - | - | - |
| Example 4 | 1 | Master Bath | - | 48" | 48" | - | 1 | 1 | 2 | No | - | - | - | B | 4 | - | - |
| Example 5 | 1 | Front Quest | - | 32" | 72" | - | 3 | 1 | 1 | Yes | 2" | 32" | No | A | 3 | 2 | 5 |
| Example 6 | 1 | Front Quest | 2 | 32" | 24" | 18" | 3 | 1 | 1 | No | - | - | - | A | 3 | 2 | 1 |
| 8 | | | | | | | | | | | | | | | | | |
| 9 | | | | | | | | | | | | | | | | | |
| 10 | | | | | | | | | | | | | | | | | |

| | |
|---|---|
| Grid Options Standard Frame Included A (Colonial) B (Prairie) C (Suspended) D (Diamond) E (Custom Image) | Specialty Options 1 Full Arch 2 Eyebrow Arch 3 Eyebrow Arch (No Legs) 4 Quarter Arch 5 Octagon 6 Circle 7 Oval 8 Continuous Jam Arch 9 Continuous Jam Angle Top 10 Continuous Jam Angle Top Full Eyebrow Arch 12 Continuous Cathedral |
|---|---|

| | |
|---|---|
| Comments: _____ _____ _____ | Mounting Options 1. Window with existing track - (Slide-in leaf springs & casement turn clips) 2. Inside brick - (Brick Clips) 3. Surface Mount - (Turn Clips with Barrel) 4. Screw 5. 3M Dual-Lock 6. Other |
|---|---|

IMPORTANT - TEXTON WILL NOT TAKE DEDUCTIONS. ORDERS MUST BE PLACED WITH EXACT SIZES

1. **Mounting Type**– Choose type of mounting option at bottom right of form. Indicates what type of hardware will be needed in order to install OPTEX.

Window Opening with Existing Track: Many existing double hung windows have a track on their windows (Fig. 1), With a tab at the sill (Fig. 2), and a slot at the top (Fig. 3) for the OPTEX Screen.

Inside Brick: Brick Clips allow for OPTEX to be inserted into a brick opening, utilizing tension.

Surface Mount: Brick Clips allow for OPTEX to be inserted into a brick opening, utilizing tension.

Screw: Merely screw through the frame and into the window. **Important:** Do not screw in to vinyl windows. In addition, careful consideration must be made in order not to break glass on any window using screws. Mount screws as far away from the glass as possible.

3M Dual-Lock: Another way of attaching OPTEX without having to drill into a window. Smooth surface required.



Fig. 1- Track Area for OPTEX Screen



Fig. 2- Tab at Sill



Fig. 3- Slot at Top for OPTEX



Fig. 4- Brick Clip

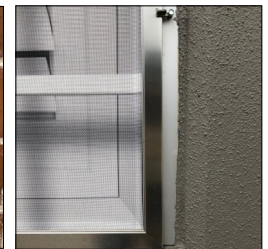


Fig. 5- Surface Mount using Turn Clips with Barrel

2. **Specialty Options:** Choose type of mounting option at bottom right of form. See Specialty Option Surcharges on page 4.

3. **Width & Height:** Indicate exact size needed for OPTEX. Texton takes no deductions. You must order the exact finished size.

4. **Leg Height:** Some Specialty Options require Leg Height. Indicate this here.

5. **Frame Color:** Choose from White, Bronze, Tan, Champagne, Mill (Anodized), and Black.

6. **Shutter Color:** Choose from White or Off-White.

MULTIPLE PATENT(S) PENDING

MEASURING FORM GUIDE (Continued)

7. **Shutter Color:** Choose from White or Off-White.
8. **Sash:** Does the window have a Sash? Would you want to include it in the OPTEX? What is the thickness of the Sash. What is its height of from the bottom the bottom to the top of the Sash?
9. **Insect Screen Below the Sash:** Many times, a window will have Insect Screen under the Sash. Adding this feature will provide a more realistic look to OPTEX for those windows.
10. **Type of Grid:** Choose from Grid Options on measure form. Colonial, Prairie, Suspended, Diamond, or Custom Image.
11. **Color of Grid:** Choose color for any type of Grid configuration.
12. **Quantity of Vertical and Horizontal Grid:** Count existing Grids or design your own. **Please note:** If the window has a Sash, then include this in your count.

Example 1



- Size 35 3/4" X 70 3/38"
- Frame– White
 - Shutter– White
 - Single Panel
 - With Sash
 - With Insect Screen
 - With Colonial Grid (2 Vertical & 5 Horizontal)

Example 4



- Size 48" X 48"
- Frame– White
 - Shutter– White
 - Double Panel
 - With Prairie Grid (Tan)

Example 3



- Size 36" X 18"
- Full Arch
 - Frame– Champagne
 - Shutter– Off-White
 - Double Panel

- Size 36" X 60"
- Frame– Champagne
 - Shutter– Off-White
 - Double Panel
 - With Sash
 - No Insect Screen
 - No Colonial Grid

Example 6



- Size 32" X 24"
- Eyebrow Arch
 - Frame– Tan
 - Shutter– White
 - Single Panel
 - With Colonial Grid (2 Vertical & 1 Horizontal)

- Size 32" X 72"
- Frame– Tan
 - Shutter– White
 - Single Panel
 - With Sash
 - With Colonial Grid (2 Vertical & 5 Horizontal)

Example 2

Example 5

OPTEX LIMITED LIFETIME WARRANTY

OPTEX Fabric

OPTEX is produced using Textilene® 90 fabric by Twitchell. Twitchell produces durable, all weather fabrics that are unmatched for quality and durability. Textilene® 90 fabrics are covered by a Lifetime limited warranty on commercial or residential applications from the original date of purchase against defects of workmanship and materials, and/or excessive loss strength from normal exposure conditions, including sunlight, rot, mildew, or atmospheric chemicals that might render it unserviceable. This warranty is extended only to the original purchaser of the material.

If the textile has been subject to damage, neglect, unreasonable or improper use or care, exposure to corrosive chemicals, accidents, vandalism, acts of God, or other causes not arising from defects in original material or workmanship, this warranty is void.

OPTEX and Light-Fade Resistant 5 Year Warranty

Light-fade resistance, sometimes referred to as print permanence, is a measure of how well a print resists fading with exposure to light and other environmental factors such as ozone. The color of an ink comes from its dyes or pigments, and over time these particles will be broken down by UV rays in sunlight, resulting in colors that fade. Prints produced with inks that contain pigments, such as HP Latex Inks, tend to last longer than prints produced with inks that contain dyes, but nonetheless they will start to fade over time depending on the intensity of UV light exposure. After the HP Latex printing process, OPTEX is then clear coated for additional UV protection that provides the user with a minimum 5 year guarantee from noticeable fading.

Overall Limited Lifetime Warranty

Texton warrants that OPTEX will be free from defects in materials and workmanship for as long as the original retail purchaser owns the product, provided that products were properly installed in residential dwellings and products were made or assembled exclusively from OPTEX materials and components.

The obligation of Texton is limited to repair or replace the shadings or components found to be defective, and excludes shipping charges and labor costs for measuring, fabricating and installation. Repairs will be made with like or similar parts. This warranty does not include any conditions or damages resulting from accidents, alterations, exposure to elements (which could cause, among other things, the fading of shade colors), misuse, abuse, motorized devices, or failure to follow our instructions with respect to measurement, installation, cleaning or maintenance. This warranty does not cover damage to shade fabrics as a result of using window cleaners or similar substances, which could cause discoloration of the shades. This warranty does not cover any condition or damage resulting from removal of the shade and reinstallation in the same or another window.

This warranty does not apply to conditions caused by normal wear and tear upon the product.

THIS WARRANTY IS EXCLUSIVE AND IN LIEU OF ALL OTHER OBLIGATIONS, LIABILITIES OR WARRANTIES. In no event shall Texton, Inc. be liable or responsible for INCIDENTAL OR CONSEQUENTIAL DAMAGES or for any other direct or indirect damage, loss, cost, expense or fee. Some states do not allow the exclusion or limitation of incidental or consequential damages, so this exclusion or limitation may not apply to you.



MULTIPLE PATENT(S) PENDING